

INSTALLATION GUIDE

Key Delivery Notes

- As standard will arrive palletised on a curtain sided articulated lorry.
- Suitable mechanical plant is required for offloading.
- Pre-established Coir Rolls vary in weight depending on maturity of vegetation and moisture content.

Measurements

	Size	Weight
Unplanted	0.2m x 3m	15kg
Unplanted	0.3m x 3m	21kg
Planted	0.2m x 3m	37kg
Planted	0.3m x 3m	52kg

Delivery and Unloading Instructions

Unloading & Storage

All Coir Rolls should be unloaded and laid out within 24 hours of delivery and kept wet at all times. In hot weather Coir Rolls should be regularly watered.

Ground Preparation and Water Levels

Prepare bed and bank so that top of the roll sits 25% above the average summer water level.

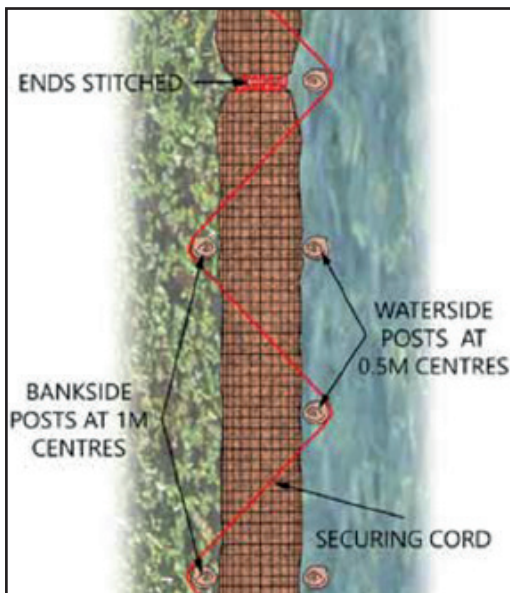
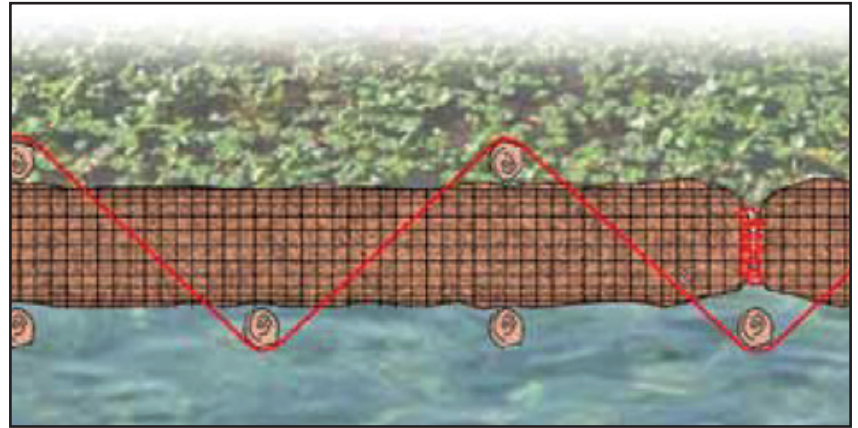
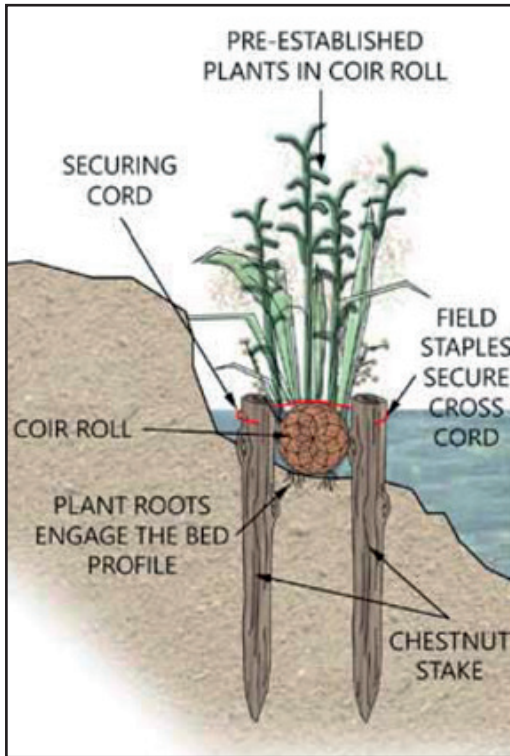
In order to get the Coir Roll to sit at the correct level a bed trench may be dug or alternatively the Coir Roll can be raised by placing it on a faggot/fascine or Rock Roll.

In higher energy situations a Rock Roll may be required in front to protect the Coir Roll.



Coir Rolls

INSTALLATION INSTRUCTIONS



- 1 Drive in the stakes at 0.5m centres at the front and 1m centres at the back.
- 2 Lift coir roll into position.
- 3 Lace ends together using 3mm fixing twine.
- 4 Hold the roll down by criss-crossing fixing twine between posts. Fix twine to the post with a fencing staple.
- 5 Backfill with suitable fill and consolidate or as specified.
- 6 Wildfowl/livestock fencing should be considered where there is a risk of grazing or trampling during the initial vegetation establishment period.

Fencing should be appropriately designed to account for any water flow, with mesh aperture that is specific to the type of waterfowl (or livestock) that is being excluded and any other site specific pressures/impacts.

Please note these are generic installation guides, if you have site specific issues please contact us directly.